

# sharing **CAPITAL** ideas

**T**his year's American Water Works Assn. (AWWA) Annual Conference & Expo (ACE11) will host more than 500 exhibitors and take place against the inspiring backdrop of Washington, D.C. A major highlight this year is the opportunity to get up close and personal with key House decision-makers affecting change. Attendees are invited to take critical issues to Congress through in-person meetings. On June 14 and 15, buses will run between the convention center and Capitol Hill between 7 a.m. and noon.

The exposition itself will kick off with the Attendee Reception on Sunday, June 12, from 4 to 6 p.m. This is an excellent chance for networking and catching up with friends and peers. Exposition hours for the remainder of the show are 10 a.m. to 5 p.m. Monday and Tuesday, and 9 a.m. to noon on Wednesday.

Attendees do not want to miss the Opening General Session June 13 at 9 a.m. The official kickoff to ACE11 will include the return of AWWA's volunteer "On Tap" Band, presentations from the organization's leadership and a keynote presentation. Notable professionals will be recognized.

Another show highlight is the free seminar on June 13 at 2 p.m. titled "U.S. Government Export Programs: Helping Your Company Join the Global Marketplace." Beyond that there will be plenty of other opportunities for learning with a full day of expert-led workshops on June 12 and exhibition hall education sessions throughout the week. The ACE11 technical program follows the tracks: Distribution & Plant Operations, Engineering & Construction, Executive, International, Legislative & Regulatory, Management, Manufacturers & Associates, Public Affairs, Research, Residuals, Reuse, Small Systems, Special Topics, Universities

Forum, Water Conservation, Water Quality, Water Resources and Poster Sessions.

Noteworthy events to check out include the "Best of the Best" Taste Test on June 14 from 3 to 4 p.m., the Women's Networking Event June 14 at 10 a.m. and a slew of Young Professionals Events taking place throughout the conference. Also returning this year is the ever-popular, high-energy Pipe-Tapping Contest, where top utility teams from section-level contests race to tap a cement-lined, ductile iron pipe. Also for the purpose of fierce yet friendly competition: the Meter Madness and Top Ops contests are cannot-miss events.

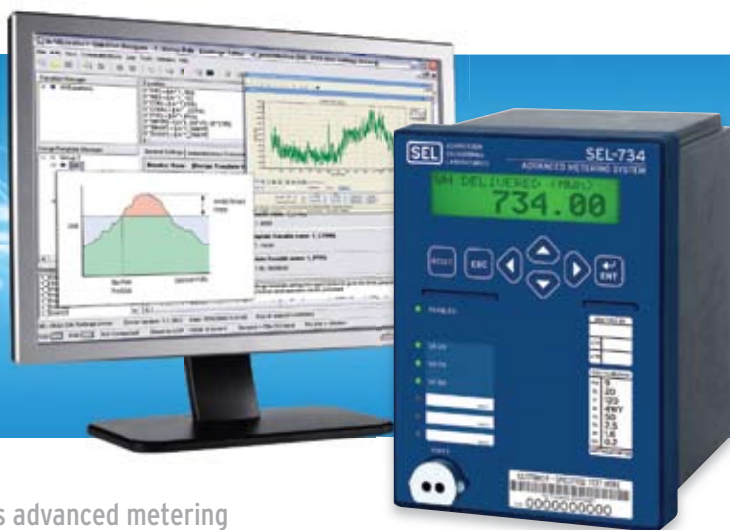
Please feel free to visit *Water & Wastes Digest's* booth (#310) and say hello to the editorial staff. Enjoy the show, and see you in Washington!

— WWD editorial staff

## Reduce Energy Costs

### With the SEL-734 Advanced Metering System

- Manage peak demand charges
- Shift loads to off-peak billing rates with time-of-use metering
- Improve power quality with advanced diagnostics
- Profile energy efficiency with submetering applications
- Apply advanced communication to integrate with SCADA system



Learn more about SEL's advanced metering solutions at [www.selinc.com/meters](http://www.selinc.com/meters).

[www.selinc.com](http://www.selinc.com) | +1.509.332.1890



### CURRENT CONTROLLER

The SCC3500 streaming current controller is a continuous sampling online instrument that allows water treatment plants to optimize chemical dosage. With an integrated PID controller, it will maintain proper chemical feed when changes in raw water characteristics (turbidity, pH, color, etc.) or flow rates occur.

Chemtrac Inc. • Norcross, GA  
800.442.8722 • [www.chemtrac.com](http://www.chemtrac.com)  
Booth #2112 • Write in 1139



### TURBIDITY STANDARDS

The new revolutionary U.S. EPA-accepted ProCal primary turbidity standards manufactured by HF scientific are safe, easy to use and certified for use in many manufacturers' turbidimeters, including the Hach 1720 C/D/E Process Series and 2100 Series of laboratory and portable instruments.

HF scientific • Ft. Myers, FL  
888.203.7248  
[www.hfscientific.com](http://www.hfscientific.com)  
Booth #1129 • Write in 1140



Write in 142



# MUST-SEE PRODUCTS



## SHUTDOWN PREVENTION

The shutdown elimination system from Hydra-Stop offers all the tools needed to eliminate shutdowns in a community. Included are line-tapping, line-stopping and valve insertion equipment and fittings. Begin with one piece of equipment, add functionality and migrate from 4-in. equipment to 20 in.

**Hydra-Stop, a Div. of ADS LLC – an IDEX Water & Wastewater Business**  
 Alsip, IL • 708.389.5111  
 www.hydra-stop.com • Booth #703  
 Write in 1141



## RESTRAINT COUPLING

Smith-Blair's joint restraint product line features the Pipe-Lock, which is a fabricated steel sleeve restraint coupling that can be used to connect and restrain plain-end pipe to plain-end pipe. It is designed to fit 3- to 48-in. ductile iron and 3- to 36-in. ductile iron O.D. Customized body lengths and transition combinations are available.  
**Smith-Blair • Texarkana, TX**  
 870.773.5127 • www.smith-blair.com  
 Booth #2503 • Write in 1142



## FLOWMETER

The new Accusonic Model 7720 Transit-Time flowmeter was designed to address the difficult installation requirements common to large UV disinfection systems. The maximum 10-path capability allows this model to measure with great accuracy and repeatability, even in the presence of distorted flow profiles common to large UV system installations.  
**Accusonic Technologies • West Wareham, MA**  
 508.273.9634 • www.accusonic.com  
 Booth #703 • Write in 1143



## ULTRASONIC METER

Designed to deliver constant accuracy and meter function, the Octave ultrasonic meter is a cost-effective investment in water measurement. It accurately measures wide-ranging flow and leaks without moving parts and maintains sustained accuracy for the life of the meter while providing smart AMR capabilities.

**Master Meter Inc. • Mansfield, TX**  
 817.842.8000 • www.mastermeter.com  
 Booth #1241 • Write in 1144



## MUNICIPAL SERVICES

TEAM Industrial Services offers valve repair, valve insertion, freezing ½ to 30 in., hi-stop ½ to 16 in., line stopping/tapping ½ to 84 in. and leak repair. It offers contract services 24/7 in 103 locations and provides 3,500 technicians and more than 1,000 tapping, stopping and valve insertion tools.  
**TEAM Industrial Services • Alvin, TX**  
 800.662.8326 • www.teamindustrialservices.com  
 Booth #1958 • Write in 1145



## PLUG LOCKS

Collect more nonpayment water bills and prevent jumpers on meter valves. Hydra-Shield plug locks are machined from 316 stainless steel and prevent rusting and corrosion while installed in the valve. Plugs are available to fit angle valves, or curb stop valves are available in three popular sizes. They require the special wrench to install or remove the plug.  
**Hydra-Shield Mfg. Inc. • Irving, TX**  
 800.676.9011 • www.hydra-shield.com  
 Booth #500 • Write in 1146



## DESALINATION PRETREATMENT SOLUTIONS



ITT Leopold desalination pretreatment solutions offer a choice of four process solutions to fit RO membrane plants' needs. These solutions remove harmful algae blooms and lower silt density index. With more than 87 years of filtration experience and desalination pretreatment plants operating in the Middle East and Australia since 1985, Leopold has expertise and desalination pretreatment choices for optimum membrane efficiency.  
**ITT Water & Wastewater – Leopold Zelenople, PA**  
 724.452.6300 • www.fbleopold.com  
 Booth #1625 • Write in 1147

## CHECK VALVES


J&S HedFlex straight duck-bill check valves are the solution for faulty flap valves and curved duck-bill checks. The curved duckbill, like a flap valve, has to swing open to allow flow. If there is an obstruction in front of these valves, they cannot open. This valve opens and allows flow around obstructions.  
**J&S Valve • Huffman, TX**  
 281.324.3990 • www.jandsvalve.com  
 Booth #1659 • Write in 1148




HEADWORKSBIO.COM

THE AMOUNT OF BIOFILM IT HOLDS IS ALMOST AS IMPRESSIVE AS THE EXPERIENCE WE PACK INTO IT.

As one of the world's largest independent providers of Moving Bed Biofilm Reactor (MBBR) and Integrated Fixed-Film Activated Sludge (IFAS) solutions, Headworks BIO™ offers big ideas in small packages. With a variety of protected surface areas available, our ActiveCell™ media offers the ultimate flexibility for application customization and effluent quality control. Coupled with more than 15 years of R&D and installation experience in municipal, industrial, and marine applications – with Headworks BIO, what goes into your system is equally as impressive as what you get out of it. | +1 713 647 6667



QUALITY THAT NEVER QUILTS™



Write in 143



## FITTINGS

These domestic fittings are designed and produced according to all applicable ANSI/AWWA standards and latest revisions. Its production facility in Houston is fully operational, and the company continually is building its inventory to better serve user needs.

**Star Pipe Products Inc. • Houston, TX**  
 281.558.3000 • [www.starpipeproducts.com](http://www.starpipeproducts.com)  
 Booth #2321 • Write in 1149



## UV SYSTEM

The new Quadron UV system from ITT Water & Wastewater, featuring the OptiCone flow diverter that ensures the same disinfection performance independent of the inflow situation while maintaining low water headloss, aims to offer better assurance for safe water than any medium-pressure UV system available. Treatment plants with a need to fit a small footprint will find this solution invaluable.



**ITT Water & Wastewater – Wedeco • Charlotte, NC**  
 704.409.9700  
[www.wedeco.com/us](http://www.wedeco.com/us)  
 Booth #1625 • Write in 1150

## MOBILE DATA COLLECTOR

Now available as part of Neptune's ARB Mobile System, the newly redesigned MRX920 is more portable than ever, weighing just 5 lb. Plus, it is as affordable as a hand-held data collector.



**Neptune Technology Group Inc. • Tallahassee, AL**  
 334.283.7482 • [www.neptunetg.com](http://www.neptunetg.com)  
 Booth #1325 • Write in 1151

From freezing cold to boiling hot, and more – all at a great price.

We give “general purpose” a whole new meaning.



Want a general purpose pH sensor that can take some punishment without paying a premium? Emerson has the solution. Our Rosemount Analytical Model 3900 sensor can take on a wide range of jobs with these features:

- > Operates in a broad spectrum of temperatures – down to sub-zero – for comprehensive application support
- > Extended sensor life delivers increased return on investment
- > Compatible with new Model 56 analyzer
- > Optimum versatility with mounting options meet a wide variety of installation requirements

Combine all that with Emerson's proven performance, ease of use, reliability and easy installation, and there's just no comparison. For more information, visit [www.raihome.com/3900](http://www.raihome.com/3900).

See us at ACE11  
 BOOTH 1608

**ROSEMOUNT**  
 Analytical

**EMERSON**  
 Process Management

The Emerson logo is a trademark and service mark of Emerson Electric Co. ©2011 Emerson Electric Co.

EMERSON. CONSIDER IT SOLVED.

Write in 144

## HYBRID METER TECHNOLOGY

The new Hybrid Meter is the latest in a long line of quality positive-displacement products from Master Meter. This newly designed meter features a host of innovations for maximum performance and precise operation. While maintaining the durability and strength of a traditional bronze exoskeleton, it features no metallic moving parts to comply with current and projected stringent environmental standards.

**Master Meter • Mansfield, TX**  
 817.842.8000 • [www.mastermeter.com](http://www.mastermeter.com)  
 Booth #1241 • Write in 1152



## CHLORINE ANALYZERS

The new HydroACT 300 residual chlorine analyzer can measure free chlorine, total chlorine, chlorine dioxide or pH, and it is appropriate for compliance reporting following U.S. EPA Method 334.0. Using a membrane-covered, three-electrode amperometric sensor, the probe design incorporates a long-lasting electrolyte solution that significantly reduces pH dependency. Because this analyzer has no moving parts and does not require any reagents or buffers, cost of ownership is low and maintenance is simple.

**Chemtrac Inc. • Norcross, GA**  
 800.442.8722 • [www.chemtrac.com/hydroact](http://www.chemtrac.com/hydroact)  
 Booth #2112 • Write in 1153



## SENSOR

The Rosemount Analytical Model 3900 general-purpose pH/ORP sensor aims to meet the broadest range of applications in the industry. It also aims to have the widest temperature operating range of any general-purpose sensor and functions at subzero temperatures, providing accurate measurements from -10°C. Each sensor is equipped with both 3/4- and 1-in. threaded mounting solutions for mounting versatility in insertion, submersion and flow-through applications.

**Emerson Process Management, Rosemount Analytical Inc. • Irvine, CA**  
 949.757.8500 • [www.raihome.com](http://www.raihome.com)  
 Booth #1608 • Write in 1154



## VALVE LOCK

The V-Lock device limits access to in-ground valves in the water distribution system. The device is designed to fit on the 2-in. operating nut on the valve and remains in place on the valve until it is removed to gain access with a special valve wrench, which is attached to a 4- to 8-ft adjustable pole.

**Hydra-Shield Mfg. Inc. • Irving, TX**  
 800.676.0911 • [www.hydra-shield.com](http://www.hydra-shield.com)  
 Booth #500 • Write in 1155





# MUST-SEE PRODUCTS



## COUPLING ADAPTER

This joint restraint product line features the Flange-Lock, which is a mechanical joint flanged coupling adapter with a Cam-Lock joint restraint. It can be used to connect and restrain flanged to plain-end pipe. It is designed to fit 3- to 48-in. ductile iron and 3- to 36-in. ductile iron O.D. Customized body lengths and transition combinations are available.  
**Smith-Blair • Texarkana, TX**  
**870.773.5127 • www.smith-blair.com**  
**Booth #2503 • Write in 1156**



## COATING

To meet the ever-changing needs of the waterworks industry, Star Pipe Products has developed an alternate coating to provide superior corrosion resistance. Star-Bond is a TGIC polyester powder coating that is applied to Star restraint casting bodies. Restraint wedges and actuators are coated with a blue fluoropolymer.  
**Star Pipe Products Inc.**  
**Houston, TX**  
**281.558.3000**  
**www.starpipeproducts.com**  
**Booth #2321 • Write in 1157**



## FEEDING SYSTEM

The Constant Chlor Plus MM-1S dry calcium hypochlorite briquette feeding system for municipal applications is designed to prepare and automatically deliver precise doses of fresh, available chlorine. It provides 0.5 to 3 lb of AVCl per hour for municipal water treatment applications.  
**Arch Water Works • Smyrna, GA**  
**800.478.5727**  
**www.archwaterworks.com/municipal**  
**Booth #2627 • Write in 1158**



## REMOTE MONITORING SOLUTION

In response to customer requests, Mission Communications, provider of cellular SCADA, has released a new interactive map for its Web-based HMI. Utilizing HTML5 technology, it is compatible with a broad range of viewing platforms and uses up-to-date street data. It is easy to change views, zoom, reposition units, add "pushpin" icons with notes and display overlays such as weather and radar.  
**Mission Communications • Norcross, GA**  
**678.969.0021 • www.123mc.com**  
**Booth #1007 • Write in 1159**



## TELEMETRY FLUSHING SYSTEMS

The portability, reliability, flexibility and stability of the patented S.M.A.R.T. flushing system aims to be the future of flushing. The system is the only production system on the market that enables operators to have real-time, two-way system management (including data logging) over remote flushing stations, according to the company. Save water, time and money by flushing only when chlorine levels drop below minimum water quality standards.  
**Hydro-Guard • Lehigh Acres, FL**  
**877.864.8500 • www.hydro-guard.com**  
**Booth #1304 • Write in 1160**



## MONITOR

The new portable Series PQ45 answers the need for a rugged field-deployable monitor capable of measuring and recording water quality data in a variety of operating environments. It is ideal for the short term, recording specific parameters such as free chlorine in potable water. The systems are available for monitoring various components in water: dissolved oxygen, free and combined residual chlorine, dissolved ozone, residual chlorine dioxide, conductivity and pH or ORP.  
**Analytical Technology Inc. • Collegeville, PA**  
**610.917.0991 • www.analyticaltechnology.com**  
**Booth #537 • Write in 1161**



## RING LOCK RESTRAINT

The Star Series 3500 PVC ring lock restraint is an innovative design featuring a 360-degree gripping ring feature. This feature provides uniform restraining pressure around the circumference of the pipe, thus avoiding distortion and point loading. Its unique independent restraining and sealing features allow it to be an ideal choice for restraining MJ fittings, hydrants and valves.  
**Star Pipe Products Inc. • Houston, TX**  
**281.558.3000 • www.starpipeproducts.com**  
**Booth #2321 • Write in 1162**



# ProSeries

## M-SERIES

**M3 Features**

- ▲ 5 Year Warranty.
- ▲ 10,000:1 Turndown.
- ▲ NSF Standard 61.
- ▲ Tube Failure Detection.
- ▲ Brushless DC Motor.
- ▲ Sold and serviced exclusively by highly skilled, factory authorized technicians.

**Blue-White Industries, Ltd.**

5300 Business Drive, Huntington Beach, CA 92649 USA  
 714-893-8529 • fax: 714-894-9492  
 sales@blue-white.com • www.blwhite.com

Write in 146

**WHILE YOU WERE OUT**

For You: \_\_\_\_\_ Time Middle of the night

**PROBLEM:**

Pump Failure	<input checked="" type="checkbox"/>	Tank Overflow	<input checked="" type="checkbox"/>
Leak on the Floor	<input checked="" type="checkbox"/>	Power Failure	<input checked="" type="checkbox"/>

Did you get the message?

From simple alarm dialers to powerful web-based remote access systems, Sensaphone offers the most choices with the highest reliability to make sure you get the message.

**Communicate via:**

- Phone Line
- Ethernet
- Satellite
- Cellular

**Notification:**

- Voice Phone Call
- Fax
- E-Mail
- Text

**NEW for 2011**

**CELL682**  
Wireless Alarms

- Uses Cellular Technology for Remote Locations
- Status and Programming Through Web Page
- 6 Analog Inputs
- 8 Dry Contact Inputs
- 2 Relay Outputs
- Full Alarm History Available Online

Call today for a **FREE** application guide

**SENSAPHONE** REMOTE MONITORING SOLUTIONS | 877-373-2700 | www.sensaphone.com | MADE IN THE USA

Write in 145