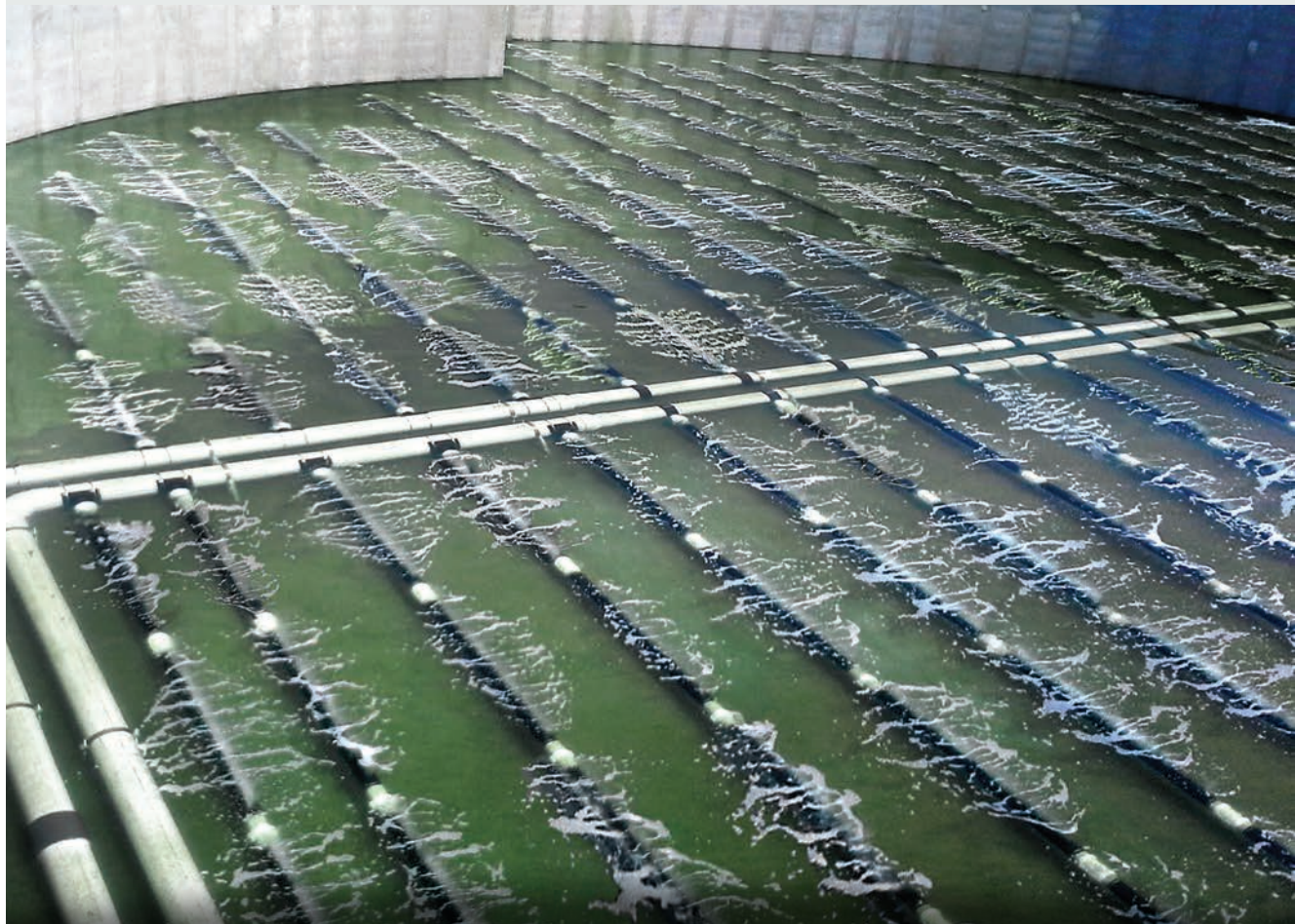


high
performance
panel
diffuser



aeration simplified.
STREAMLINETM

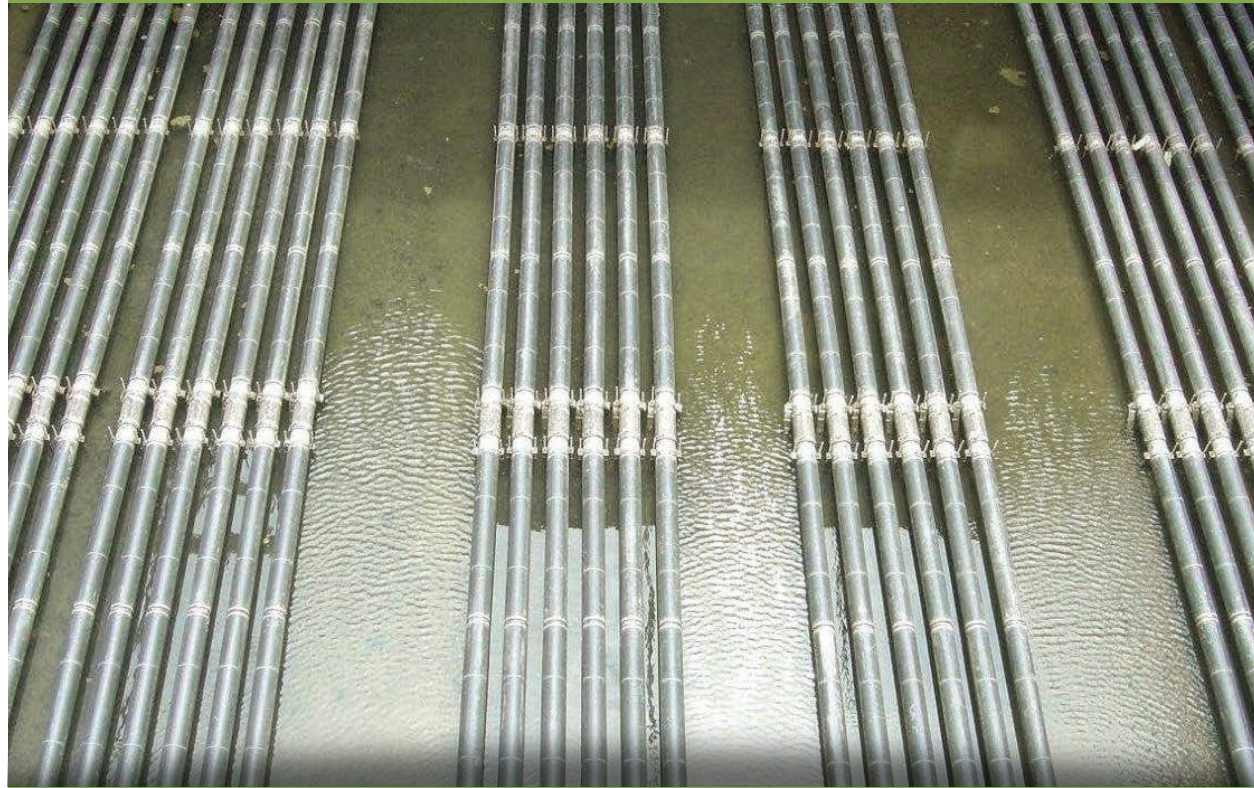


cutting edge diffused aeration technology from
Environmental Dynamics International

aeration simplified.

StreamLine's proven design elevates the industry's standard practice by minimizing in-basin aeration piping and attached diffuser components. The self contained membrane panels and the inline support system reduce stress points and potential material fatigue. In short, StreamLine delivers a new level of performance, simplicity and service life.

StreamLine represents the next generation in diffused aeration technology marking the convergence of 100 years of industry application know-how and mechanical design expertise.



StreamLine provides full solids suspension both above and below the diffuser grid. Elevation of the diffuser is adjustable to match blower performance.

- high structural integrity
- configurable to any plant layout
- high temperature / extreme condition options
- maximum oxygen transfer for high SOTE
- lowest total ownership cost

Triple Backflow Prevention

StreamLine Coupling

Membrane Clamp

Die-cut Perforated Membrane

Patent Pending

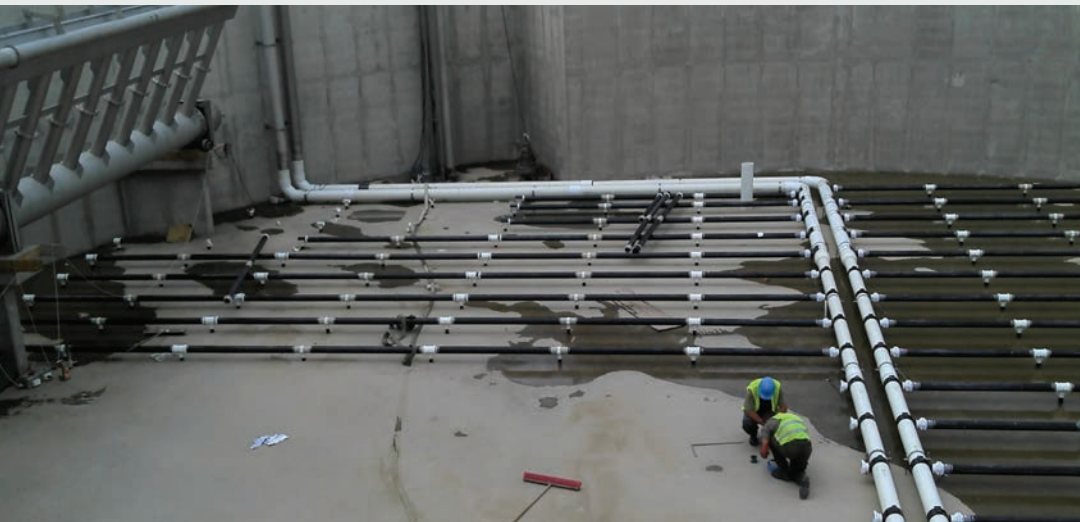
versatile.

StreamLine is well suited to a wide range of aeration requirements including on/off applications and high load environments with mechanical mixing or high velocities.

A premium panel product, StreamLine incorporates proprietary features that offer the greatest range of SOTE and airflow in the industry — up to 80% installation densities.

Available in a variety of materials for chemical, temperature and mechanical performance.

Coupling is specially designed to allow each module to be serviced without disturbing balance of piping or adjacent diffuser modules.



configurations

StreamLine can be configured for any industrial or municipal application, tank size or geometry.

robust options

These configurations offer the options of stainless steel and composite resin lateral and PTFE Matrix impregnated membranes.

Units are also available in 100% non-metallic composition for severe or corrosive conditions.

simple.

Patented configuration with unmatched system simplicity...results: up to 33% reduction in system installation time compared to competing panel systems.

Plus membrane replacement can be completed in the field.

efficient.

StreamLine's geometry supports low flux rate resulting in ultra high OTE performance.

Precision die-cut NanoPore and MicroPore perforation for meeting air handling, OTE and pressure objectives.

reliable.

Engineered materials for maximum chemical, temperature and UV resistance and advanced PTFE impregnated membranes for reduced fouling and optimum performance.

for additional information visit
www.streamlinediffuser.com



engineered solutions.

EDI engineered solutions are the result of over 38 years experience in the water and wastewater treatment industry. By applying their advanced technology principles of aeration and biological treatment to challenges facing their customers, EDI has earned the reputation of being an innovator and industry leader.



EDI provides municipal and industrial treatment solutions in over 100 countries, has 6,000+ installations, and treats the wastewater needs for more than 300 million people.



Environmental Dynamics International
5601 Paris Road
Columbia MO 65202 USA

1+573.474.9456
www.environmentaldynamics.com



www.streamlinediffuser.com



STREAMLINE™

High-Performance Panel Diffuser

Highest Diffuser Density Panel on the Market

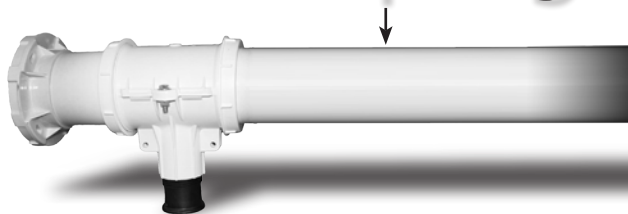
Lowest Cost of Ownership of ANY Panel on the Market

Highest Wire to Water (SAE) Rating of ANY Panel Diffuser on the Market

Getting Started

- The StreamLine panel system
- can be engineered for any
- application, in 3 easy steps

1. Piping

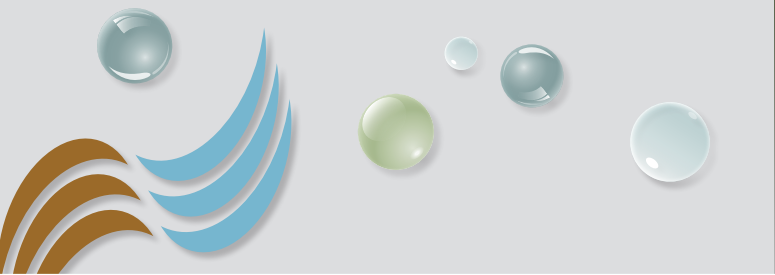


2. Membrane



3. Perforation

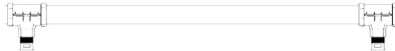
Environmental Dynamics International
www.StreamLineDiffuser.com








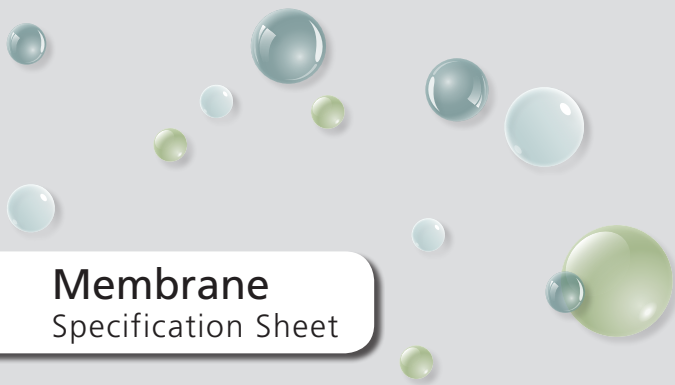
Choose Your Piping

The piping is the foundation of the aeration system. Careful consideration should be taken to determine which material is right for your specific application.

Piping Specification Sheet



| | | | |
|--|---|-------|--|
|  | Fiberglass Life Expectancy: Superior Upper Temperature Limit: 210°F | | Applications: Industrial Waste, High Temperatures, Salt Water, High Chemical, High Energy |
|  | Stainless Steel Life Expectancy: Superior Upper Temperature Limit: 250°F | | Applications: Industrial Waste, High Temperatures, High Energy |
|  | Polypropylene Life Expectancy: Excellent Upper Temperature Limit: 170°F | | Applications: Municipal Waste, Moderate Temperatures, Light Industrial, Chemical |
|  | CPVC Life Expectancy: Excellent Upper Temperature Limit: 200°F | | Applications: Municipal Waste, Elevated Temperatures, Light Industrial |
|  | PVC Life Expectancy: Excellent Upper Temperature Limit: 140°F | | Applications: Municipal Waste, Moderate Temperatures |



Membrane Specification Sheet

Choose Your

Membrane

- EDI offers an extensive array of membranes
- to fit any unique wastewater application.

Matrix

PTFE fully embedded throughout the membrane

Mechanical Strength - ▲▲▲▲▲
Durability - ▲▲▲▲▲

Temperature Rating - up to 170°F
Economic Life - ●●●●●

Applications - High mix of industrial influent, Improved pressure stability, All domestic waste

Matrix Plus

PTFE embedded within top layer of the membrane

Mechanical Strength - ▲▲▲▲▲
Durability - ▲▲▲▲▲

Temperature Rating - up to 200°F
Economic Life - ●●●●●

Applications - High mix of industrial influent, Improved pressure stability, All domestic waste

High-Temp Polyurethane

Scientifically engineered polyurethane designed for extreme heat conditions

Mechanical Strength - ▲▲▲▲▲
Durability - ▲▲▲▲▲

Temperature Rating - up to 180°F
Economic Life - ●●●●●

Applications - Oil & gas, Food processing, Animal by-products, All domestic waste

Performance Optimized

Scientifically formulated ingredients developed for your unique application

Mechanical Strength - ▲▲▲▲▲
Durability - ▲▲▲▲▲

Temperature Rating - up to 250°F
Economic Life - ●●●●●

Applications - ALL

Polyurethane

The industry standard for light industrial applications

Mechanical Strength - ▲▲▲▲▲
Durability - ▲▲▲▲▲

Temperature Rating - up to 160°F
Economic Life - ●●●●●

Applications - Oil & gas, Food processing, Animal by-products, All domestic waste

EPDM

The industry standard for municipal applications

Mechanical Strength - ▲▲▲▲▲
Durability - ▲▲▲▲▲

Temperature Rating - up to 240°F
Economic Life - ●●●●●

Applications - Light mix of industrial influent, All domestic waste

Choose Your Perforation

- Choosing the optimal perforation pattern
- assures premium (long-term) performance.
- EDI offers 3 perforation categories:

Perforation Specification Sheet

Nano Pore
High Efficiency
0.5mm - 0.75mm

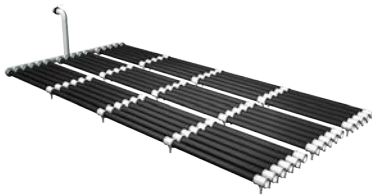
Micro Pore
Standard
1.0mm - 1.75mm

Mega Pore
High Volume
≤ 2.0mm

*Custom Perforations can be designed for specific applications



System Density Options

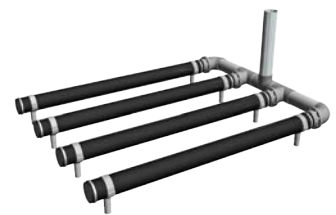


High

Engineered for higher efficiency applications.
Lower operation cost
Floor Coverage 20%-80%

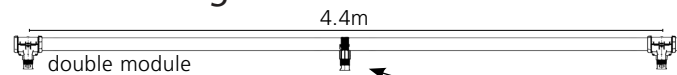
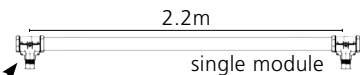
Moderate

Engineered for moderate efficiency.
Low capital cost
Floor Coverage 4%-20%



Components

Standard Module Lengths



StreamLine Coupling

- 1) Allows easy access and maintenance of individual modules.
- 2) Can be used with any type of piping material.

Super Strut Support

- 1) Highest mechanical integrity: exceeds stainless steel alternative.
- 2) Ease of installation: Single anchor, fully adjustable.



Side by Side

Comparison

• Before you commit to any aeration system,
• please ask yourself the following questions.



Has a profiled top surface and no side edges, eliminating the chance of retained coarse solids?

Lowest panel system back pressure available on the market?

Offers a panel membrane with PTFE fully embedded throughout the material?

Can panel be used in aeration basins without grit removal upstream?

Does panel have less than 3' of edge seal to minimize diffuser breach?

Does panel offer triple back flow prevention?

Can membrane be replaced in the field, and carry a manufacturer's warranty?

Offers high temperature resistant options?

Offers a complete non-metallic option available for corrosive environments?

Can system function at optimum without frequent venting or air-bumping?

Is there a panel option that can be safely acid cleaned?

StreamLine

Brand X

YES

NO

YES

NO

YES

NO

YES

NO

YES

NO

YES

NO

YES

NO

YES

NO

YES

NO

YES

NO

YES

NO

See Our Installations

| Location | Owner | Date | Product |
|----------------------------|--------------|----------|-----------------|
| Erzurum | Turkey | 2/25/13 | Streamline - 4" |
| Severnaya Poultry WWTP | Russia | 7/8/13 | Streamline - 4" |
| Ameccameca | Mexico | 7/18/13 | Streamline - 4" |
| Grove City Rehab Phase III | PA, USA | 12/5/13 | Streamline - 4" |
| Project Power Plant | Venezuela | 12/27/13 | Streamline - 4" |
| Rainier Biogas | WA, USA | 1/30/12 | Streamline - 4" |
| Ommegang Brewery | NY, USA | 4/5/12 | Streamline - 4" |
| Mars Candy Company | TN, USA | 6/29/12 | Streamline - 4" |
| City of Ottoville | OH, USA | 7/13/12 | Streamline - 4" |
| Grove City Rehab Phase II | PA, USA | 7/26/12 | Streamline - 4" |
| USVI | St. Croix VI | 9/4/12 | Streamline - 4" |
| Vargard | Sweden | 4/21/11 | Streamline - 4" |
| Abbott Aeration System | Ireland | 5/18/11 | Streamline - 4" |
| Coteminas | Argentina | 6/2/11 | Streamline - 4" |
| Project Laden MBR Plant | Saudi Arabia | 7/6/11 | Streamline - 4" |
| IDI Pilot Project Study | VA, USA | 8/2/11 | Streamline - 4" |
| Bukovel | Ukraine | 8/5/11 | Streamline - 4" |
| Bag Bag | Philippines | 9/8/11 | Streamline - 4" |
| Tatalon | Philippines | 9/8/11 | Streamline - 4" |
| Wennington Poultry | OH, USA | 9/20/11 | Streamline - 4" |
| Surat 5 MLD | India | 9/30/11 | Streamline - 4" |
| Pinsa Tuna Cannery | Mexico | 10/10/11 | Streamline - 4" |
| Dailuaine Distillery | Scotland | 12/9/11 | Streamline - 4" |
| Nijhuis | Russia | 11/11/10 | Streamline - 4" |

