



Plug-in Seals™

DOUBLE MECHANICAL SEAL IN ONE EASY-TO-INSTALL UNIT

- Inner and outer seals in a single unit assembly
- Outstanding leakage prevention
- Solid seal ring design
- Durable and resistant materials
- Quick and easy to install
- Integrated cooling pump
- Active Seal™ on selected variants



FLYGT
a xylem brand

Plug-in Seal™ KEY FEATURES

Powerful integrated cooling pump

The axial flow propeller provides an efficient cooling flow for pumps with internal cooling systems.

Durable and resistant materials

Inner and outer seal rings in wear-resistant tungsten carbide (WCCR) increase seal lifetime. Outer seal rings are also available in chemical-resistant silicon carbide. Viton O-rings secure high temperature performance.

Solid seal ring design

Minimizes the risk of warped seal faces that cause leakage. Minimized seal ring diameters ensure low leakage and low power losses. Mechanical torque lock ensures the positive drive of the rotating seal ring.



Single unit assembly

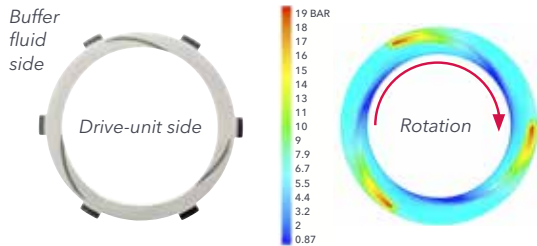
Enhances sealing reliability by simultaneously replacing both the inner and outer seals. Protects seal surfaces from contamination and springs from corrosive media and clogging.

Easy to install and upgrade

Saves time and money. No special service tools are required. Fully interchangeable with previous generations of Flygt Plug-in Seals and factory tested for airtightness before delivery.

Patented Active Seal™ functionality

Selected variants include a unique inner seal that pumps liquid away from the motor with the help of laser-cut Active Seal grooves.



Flygt Plug-in Seals feature two independent mechanical seals mounted in a single ready-to-install unit. Simply place the Plug-in Seal into position, no special service tools are required. Intelligent design protects sensitive sealing surfaces and springs from impurities, which contributes to enhanced sealing reliability, less downtime and reduced maintenance costs. Plug-in Seals with Active Seal have laser-cut spiral grooves in the seal face of the inner seal that pump liquid from the inner to the outer diameter of the seal ring, thus preventing liquid from entering the stator housing.

Plug-in Seal product range

Flygt product range	Pump or mixer model							
2000 series	2610	2620	2630	2640	2660	2670		
3000 series	3153	3171	3202	3301	3315			
4000 series	4610	4620	4630	4640	4650	4660	4670	4680
5000 series	5100	5150						



Xylem, Inc.
14125 South Bridge Circle
Charlotte, NC 28273
Tel 704.409.9700
Fax 704.295.9080
855-XYL-H201 (855-995-4261)