



Model 1200 Vapor Phase

APPLICATIONS

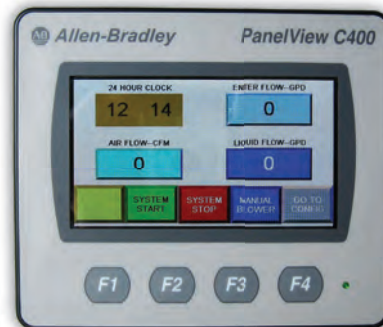
- Petrochemical Plants
- Foundries
- Food processors
- Wastewater treatment
- Landfills
- Pulp & paper
- Soil remediation

- Simple to install, operate & maintain
- Smaller droplets - more absorption
- Optimized chemical use
- No water required

- Reliable, flexible & efficient
- Reduced capital expense
- Requires no mixing or dilution
- No nozzle maintenance

CONTROLS

- PLC based touch screen
- Real time airflow rate display
- Liquid flow control and optimization
- Programmable - auto sequence start up
- Alarm panel - Low fluid level in drum
Low pump pressure
Low compressed air pressure
Blower overload
Low fluid level in feed tank
Airflow alarm



Model	Airflow	Liquid flow	Blower	Dimensions	Power ¹	Amp
450	450 cfm at 12" WG	4.5 GPD	3 HP to 6" outlet	3-1/2'x3-1/2'x3'H	460/3/60	12A
600	600 cfm at 20" WG	6 GPD	5 HP to 6" outlet	3'x6'x4-1/2' H	460/3/60	15A
1200	1200 cfm at 20" WG	12 GPD	7.5 HP to 8" outlet	3'x6'x4-1/2' H	460/3/60	20A
2400	2400 cfm at 25" WG	24 GPD	15 HP to 12" outlet	4'x7'x5' H	460/3/60	40A

1. Alternates available

CHOOSING THE RIGHT MODEL - duct size and length; pressure drop

CFM	Max Product Uptake	IWG	Pipe Dia. Inches	Lose/100'	Total Length Feet
2400	24 GPD	25	8	10	212
2400	24 GPD	25	10	2.5	850
2400	24 GPD	25	12	1	2125
1200	12 GPD	21	6	10	170
1200	12 GPD	21	8	2.2	775
1200	12 GPD	21	10	0.7	2450
1200	12 GPD	21	12	0.3	5700
600	6 GPD	21	6	3	570
600	6 GPD	21	8	0.6	2850
600	6 GPD	21	10	0.2	8500
450	4.5 GPD	12	6	1.5	680
450	4.5 GPD	12	8	0.4	2500
450	4.5 GPD	12	10	0.1	10000

OPTIONS AND ACCESSORIES

Alternate voltage. Standard is 480 Volt, three phase, 60 hertz.

Freeze Protection Package - for outdoor installations in freezing climates.

- Propylene glycol additive > +20° F
- Heated piping
- Drum heater module
- Air inlet heater module

Wind Direction optimizer - to manage product delivery as a function of prevailing wind.

Remote Access and Control - remote start/stop, alarms & monitor/control.

