

Product information presented here reflects conditions at time of publication. Consult factory regarding discrepancies or inconsistencies.



MAIL TO: P.O. BOX 16347 • Louisville, KY 40256-0347
 SHIP TO: 3649 Cane Run Road • Louisville, KY 40211-1961
 (502) 778-2731 • 1 (800) 928-PUMP • FAX (502) 774-3624

visit our web site:
www.zoeller.com



64 HD SERIES
PRODUCT FEATURES
25 - 60 BHP
4" & 6" Flanged Discharge Units
Models: 6424 - 6428



APPLICATIONS

- Engineered Lift Stations.
- Storm Water Removal.
- Wastewater Transfer.
- Industrial Wastewater.

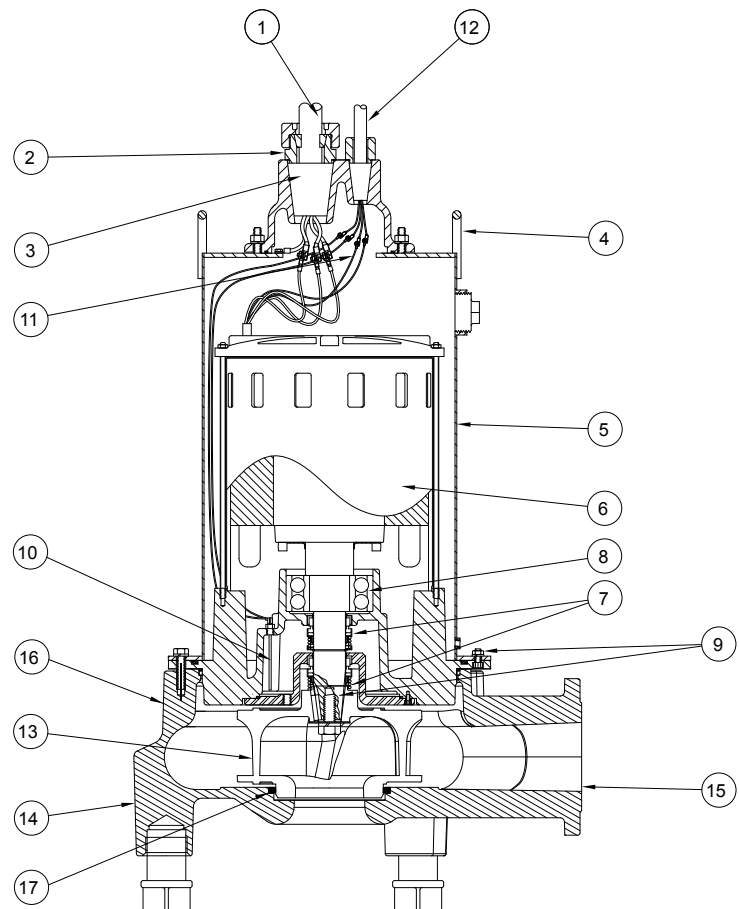
SPECIFICATIONS

PUMP:

- Discharge size - 4" & 6" horizontal flanged.
- Solids - 4" - 3-1/8" spherical capability.
- Solids - 6" - 4" spherical capability.
- Seals - Dual mechanical; carbon/rotary, ceramic/stationary, Buna-N elastomers
- Seal leak probes.
- Construction - Cast Iron ASTM A-48, Class 30, 30,000# tensile strength.
- Attaching hardware - 304 stainless steel.
- "O" ring elastomers - Buna-N.
- Ductile iron impeller - Dual vane enclosed design.
- Pump housing wear ring (4" only)
- Optional:
 - Trimmed Impeller
 - Additional cord length ____ ft.
 - Rail System

MOTOR:

- 3 Phase - 230 Volt, 1750 RPM: 25 & 30 BHP;
 460 Volt, 1750 RPM: 25 & 60 BHP
- Stator - Class F insulation and lead wires. Nema design.
- Thermal sensor protection.
- Housing - Stainless Steel, oil filled.
- Ball bearings - Dual high carbon chromium steel.
- Power cable length - 25'.
- Optional:
 - Inverter duty motor



SK3140

FEATURES:

1. 25' of extra heavy duty power cable.
2. Heavy wall conduit threads and strain relief grommet for cable protection.
3. Protected cable entrance. The compression grommet allows for field replacement of the cable and each conductor is individually sealed to eliminate cord wicking of liquids.
4. Lifting lugs integral part of housing.
5. Oil-filled stainless steel motor housing assures uniform heat distribution, lubricates bearings, and conducts heat for cooler running.
6. Heavy duty motor features ball bearing construction. Class F motor insulation is double dipped and baked. End connections and lead wires are Class F. At maximum load, winding temperature will not exceed 250 °F (155 °C) with motor housing not submerged.
7. Tandem seals. Carbon/rotating, ceramic/stationary, and Buna-N elastomers.
8. Upper and lower high carbon chromium steel ball bearings.
9. Stainless steel shaft and hardware resists corrosion.
10. Seal leak detector probes.
11. Thermal sensor protection.
12. 25' sensor cable.
13. Balanced ductile iron 2 vanes closed impeller with top & bottom pump out vanes for seal protection keyed and bolted to shaft.
14. Concentric case reduces radial loading for longer bearing and seal life.
15. 4" or 6" flanged horizontal Class 125 discharge.
16. Unit protected with a 2-part corrosion resistant epoxy coating.
17. Wear ring (4" discharge only)

Your Peace of Mind is Our Top Priority®

Product information presented here reflects conditions at time of publication. Consult factory regarding discrepancies or inconsistencies.



MAIL TO: P.O. BOX 16347 • Louisville, KY 40256-0347
 SHIP TO: 3649 Cane Run Road • Louisville, KY 40211-1961
 (502) 778-2731 • 1 (800) 928-PUMP • FAX (502) 774-3624

visit our web site:
www.zoeller.com



**64 HD SERIES
 TECHNICAL DATA
 25 - 60 BHP
 4" & 6" Flanged Discharge Units
 Models: 6424 - 6428**



MODEL NUMBER:	<input type="checkbox"/> 6424	<input type="checkbox"/> 6425	<input type="checkbox"/> 6426	<input type="checkbox"/> 6427	<input type="checkbox"/> 6428
PUMP NAME PLATE HORSEPOWER: BHP	25.0	30.0	40.0	50.0	60.0
NEC LOCKED ROTOR CODE:	F	E	E	D	C
MAXIMUM KW INPUT:	24.2	28.1	36.0	42.5	50.0
IMPELLER DIAMETER:	- 4" discharge - 6" discharge	9-7/8" (25.1 cm) 9-1/8" (23.2 cm)	10-3/8" (26.4 cm) 9-1/2" (24.1 cm)	11-3/8" (28.9 cm) 10-1/8" (25.7 cm)	12-1/8" (30.8 cm) 10-5/8" (27 cm) 12-7/8" (32.7 cm) 11" (27.9 cm)
PUMP WEIGHT: lbs.	- 4" discharge - 6" discharge	825 lb (374 kg) 850 lbs (385 kg)	825 lb (374 kg) 850 lbs (385 kg)	825 lb (374 kg) 850 lbs (385 kg)	825 lb (374 kg) 850 lbs (385 kg)
DISCHARGE SIZE:	<input type="checkbox"/> 4" FLANGED HORIZONTAL		or	<input type="checkbox"/> 6" FLANGED HORIZONTAL	
PERFORMANCE CURVE:	<input type="checkbox"/> 4" DISCHARGE HIGH HEAD DESIGN - REF ZM2969			<input type="checkbox"/> 6" DISCHARGE HIGH FLOW DESIGN - REF ZM2969	

SOLID SIZE: in (mm)	4" - 3-1/8" (102 mm - 79 mm) 6" - 4" (152 mm - 102 mm)	TANDEM SEALS:	STANDARD
IMPELLER TYPE:	DUCTILE IRON 2-VANE ENCLOSED	MOTOR DESIGN LETTER:	NEMA B
FLANGE:	ANSI B16.1	CORD LENGTH: ft (m)	25' (7.6 m) <input type="checkbox"/> 50' (15.2 m)
MOTOR SHAFT:	416 SS	POWER CORD SIZE:	#2-4 SO
RPM:	1725	STATOR & LEAD WIRES INSULATION:	CLASS F
MOTOR TYPE:	STANDARD SUBMERSIBLE <input type="checkbox"/> INVERTER DUTY SUBMERSIBLE*	MAXIMUM STATOR TEMPERATURE:	311 °F / 155 °C
		SENSOR CORD SIZE:	#16-5 SO

*30-60 Hz, NEMA MG-1, Part 30

SHAFT SEAL CONSTRUCTION:	STANDARD	CARBON/CERAMIC
	OPTIONAL	<input type="checkbox"/> UPPER <input type="checkbox"/> LOWER - SILICON CARBIDE/SILICON CARBIDE
STANDARD SENSING DEVICES:	MOTOR THERMAL SHUTOFF	THERMAL SENSORS WITH AUTOMATIC RESET
	MOISTURE DETECTION	MOISTURE SENSING PROBES
IMPELLER: SIZE, DESIGN POINT	IMPELLER DIA. _____", DESIGN POINT: _____ GPM @ _____' TDH	
RECOMMENDED FLUID LEVEL FOR CONTINUOUS OPERATIONS:	36" (0.9 m) (For Continuous Duty, Refer to Warranty)	
MAXIMUM WATER TEMPERATURE FOR CONTINUOUS OPERATIONS:	104 °F (40 °C)	

MODELS	BHP	SERVICE FACTOR	<input type="checkbox"/> 230V / 3 PHASE		<input type="checkbox"/> 460V / 3 PHASE	
			FLA	LRA	FLA	LRA
6424	25.0	1.20	68	314	34	157
6425	30.0	1.20	80	360	40	180
6426	40.0	1.20	N/A	N/A	52	240
6427	50.0	1.20	N/A	N/A	62	278
6428	60.0	1.0	N/A	N/A	75	278