

Trusted. Tested. Tough.™

Product information presented here reflects conditions at time of publication. Consult factory regarding discrepancies or inconsistencies.



MAIL TO: P.O. BOX 16347 • Louisville, KY 40256-0347
SHIP TO: 3649 Cane Run Road • Louisville, KY 40211-1961
(502) 778-2731 • 1 (800) 928-PUMP • FAX (502) 774-3624

visit our web site:
zoellerengineered.com



61 HD SERIES PRODUCT FEATURES 3" & 4" Flanged Horizontal Discharge Units

Covered by US Patent Number 6,364,620.

APPLICATIONS

- Engineered Lift Stations
- Storm Water Removal
- Wastewater Transfer
- Industrial Wastewater

SPECIFICATIONS

PUMP:

- Solids - 2½" spherical capability
- Discharge Size - 3" & 4" Flanged horizontal
- Seals - dual mechanical carbon/rotary ceramic/stationary, Buna-N elastomers
- Construction - Cast Iron ASTM A-48, Class 30, 30,000# tensile strength, protected with a corrosion resistant baked on epoxy powder coating
- Balanced concentric pump housing and impeller
- Attaching Hardware - 304 stainless steel
- O-ring Seals: Buna-N
- Ductile Iron Impeller - 2 blade semi-open with top pump out vanes
- Optional:

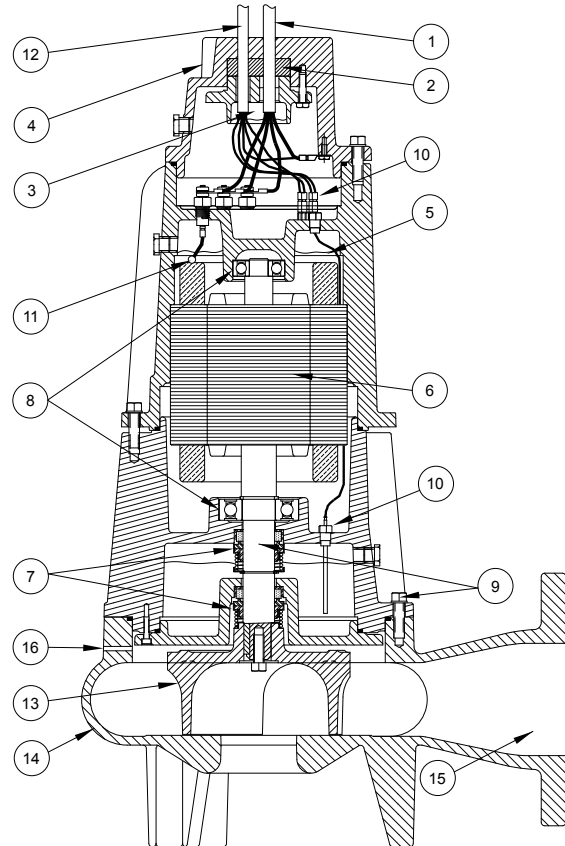
- | | |
|---|--|
| <input type="checkbox"/> Thermal sensor and moisture detection system | <input type="checkbox"/> 3450 RPM High Head units (3" discharge units only) |
| <input type="checkbox"/> Trimmed Impeller | <input type="checkbox"/> Dry pit configuration (1-3 BHP, not CSA listed) |
| <input type="checkbox"/> Vortex Impeller | <input type="checkbox"/> High Temperature Construction (1-3 BHP, not CSA listed) |
| <input type="checkbox"/> Bronze Impeller | <input type="checkbox"/> Inverter Duty Motor (1-5 BHP, not CSA listed) |
| <input type="checkbox"/> 3" solids capacity (4" discharge units only) | <input type="checkbox"/> Rail Systems |
| <input type="checkbox"/> Silicon carbide seal(s) | |
| <input type="checkbox"/> Viton O-ring Elastomers | |
| <input type="checkbox"/> Additional cord length ____ ft. | |

MOTOR:

- 1 Phase - 230 Volt, 1750 RPM
- 3 Phase - 200/230/460/575 Volt, 1750 RPM
- Stator - Class F insulation and lead wires NEMA B design
- Housing - Cast Iron, oil-filled
- Ball Bearings - Dual high carbon chromium steel
- Power Cable Length - 25'

FEATURES:

1. 25' of heavy duty power cable
2. Protected cable entrance. The compression grommet allows for field replacement of the cable.
3. Each conductor is individually sealed to eliminate cord wicking of liquids.
4. Lifting lug integral part of housing
5. Oil-filled motor housing assures uniform heat distribution, lubricates bearings, and conducts heat for cooler running.
6. Heavy duty motor features ball bearing construction. Class F motor insulation is double dipped and baked. End connections and lead wires are Class F. At maximum load, winding temperature will not exceed 250°F with motor housing not submerged.
7. Tandem seals, Carbon/rotating, ceramic/stationary, Buna-N elastomers
8. Upper and lower high carbon chromium steel ball bearings
9. Stainless steel shaft and hardware resists corrosion
10. Optional: Patented moisture detection system with upper and lower probes, protecting the motor from liquid entry.
11. Optional: Thermal sensor protection. Motors have 2 normally closed temperature sensors imbedded in windings.
12. Optional: 25' sensor cable



ZEPA0462B

13. Balanced Ductile Iron 2 vanes semi-open impeller with top pump out vanes for seal protection. Keyed and bolted to shaft
14. Concentric case reduces radial loading for longer bearing and seal life.
15. 3" or 4" flanged horizontal discharge
16. Vent hole helps prevent air locking
17. Unit protected with corrosion resistant baked on epoxy powder coating.

For additional information on 61 HD Series pumps, refer to catalog on Technical Data ZM1750; Performance Data ZM1744, ZM1752, ZM1753; Dimensional Data ZM1756, ZM1757, ZM1758, ZM1759; Guide Specifications ZM1743; Replacement Parts ZM1760; and Owners Manual ZM1759.

For information on additional Zoeller products refer to catalog on Rail Systems, ZM1347; Control Panels, ZM1342; Float Switches and J-Boxes, ZM1536; Float Switch Brackets, ZM1328; Pump Lifting Cables, ZM1328; Check Valves and Piping Accessories, ZM1348.



62 HD SERIES

PRODUCT FEATURES

4" & 6" FLANGED DISCHARGE UNITS

Models: 6220 6221 6222 6223 6224



Covered by US Patent Number 6,364,620.

APPLICATIONS

- Engineered Lift Stations
- Storm Water Removal
- Wastewater Transfer
- Industrial Wastewater



SPECIFICATIONS

PUMP:

- Solids - 3" spherical capability
- Discharge Size - 4" & 6" horizontal flanged
- Seals - dual mechanical carbon/rotary, ceramic/stationary, Buna-N elastomers
- Construction - Cast Iron ASTM A-48, Class 30, 30,000# tensile strength, corrosion resistant powder coated epoxy finish
- Attaching Hardware - 304 stainless steel
- O-ring Elastomers - Buna-N
- Impeller - 2 blade semi-open Ductile Iron with top pump out vanes
- Moisture detection system
- Optional:

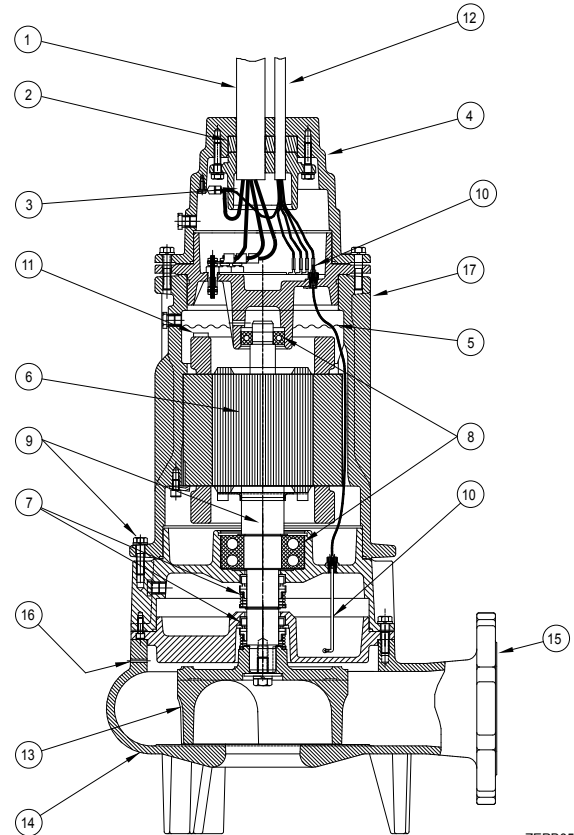
<ul style="list-style-type: none"> <input type="checkbox"/> Silicon Carbide Seal(s) <input type="checkbox"/> Viton O-ring Elastomers <input type="checkbox"/> Vortex Impeller <input type="checkbox"/> Bronze Impeller <input type="checkbox"/> Trimmed Impeller <input type="checkbox"/> Additional Cord Length ____ 	<ul style="list-style-type: none"> <input type="checkbox"/> Dry Pit Configuration (5-10 BHP, not CSA listed) <input type="checkbox"/> High Temperature Construction (5-10 BHP, not CSA listed) <input type="checkbox"/> Inverter Duty Motors (not CSA listed) <input type="checkbox"/> Rail Systems
---	---

MOTOR:

- 1 Phase - 230 Volt, 1750 RPM (5 and 7.5 BHP)
- 3 Phase - 200/230/460/575 Volt, 1750 RPM
- 5 thru 20 BHP
- Stator - Class F insulation and lead wires NEMA B design
- Thermal sensor and leads.
- Housing - Class 30 cast iron, finned, oil-filled
- Ball Bearings - Dual high carbon chromium steel
- Power Cable Length - 25'

FEATURES

1. 25' of extra heavy duty power cable
2. Protected cable entrance. The compression grommet allows for field replacement of the cable. Optional: 3" heavy wall conduit threads for protection of cable assemblies.
3. Potted cords. Each conductor individually sealed to eliminate cord wicking of liquids.
4. Lifting lugs integral part of housing (not shown)
5. Oil-filled motor housing with finned casting assures uniform heat distribution, lubricates bearings, and conducts heat for cooler running.
6. Heavy duty motor features ball bearing construction. Class F motor insulation is double dipped and baked. End connections and lead wires are Class F. At maximum load, winding temperature will not exceed 250 °F with motor housing not submerged.
7. Tandem seals. Carbon/rotating, ceramic/stationary, Buna-N elastomers. Optional seal materials available.
8. Upper and lower high carbon chromium steel ball bearings
9. Stainless steel shaft and hardware resists corrosion
10. Patented moisture detection system with upper and lower probes, protecting the motor from liquid entry.



ZEPB0578

11. Thermal sensor provides protection against overheating
12. 25' sensor cable
13. Balanced 2 vane semi-open impeller with top pump out vanes for seal protection keyed and bolted to shaft. Recessed vortex design also available as an option.
14. Concentric case reduces radial loading for longer bearing and seal life
15. 4" or 6" flanged horizontal discharge. Dry pit units available upon request.
16. Vent hole helps prevent air locking.
17. Entire unit protected with a corrosion resistant powder coated epoxy finish

For additional information on the 62 HD Series pumps, refer to catalog on Performance information, ZM2348 and ZM2349; Dimensional Data information, ZM2311, ZM2312, ZM2313 and ZM2314; Guide Specifications, ZM2350; Replacement Parts List and Repair Manual, ZM2354 and Owner's Manual, ZM2353.

For information on additional Zoeller products refer to catalog on Rail Systems, ZM1347; Control Panels, ZM1342; Float Switches and J-Boxes, ZM1536; Float Switch Brackets, ZM1328; Pump Lifting Cables, ZM1328; Check Valves and Piping Accessories, ZM1348.